

Daily Summary for Amman Stock Exchange

1- VALUE TRADED (JD)

	2018	2019	NET CHANGE	CHANGE (%)
Daily	3,768,722	3,335,290	-433,432	-11.50%
Cumulative(3/3-11/3)	30,583,300	34,300,234	3,716,934	12.15%
Cumulative(2/1-11/3)	283,525,672	222,398,769	-61,126,903	-21.56%

2- NO. OF SHARES TRADED

	2018	2019	NET CHANGE	CHANGE (%)
Daily	3,585,755	3,294,164	-291,591	-8.13%
Cumulative(3/3-11/3)	28,289,942	31,243,630	2,953,688	10.44%
Cumulative(2/1-11/3)	242,139,203	177,474,240	-64,664,963	-26.71%

3- NO. OF TRANSACTIONS

	2018	2019	NET CHANGE	CHANGE (%)
Daily	2,064	1,962	-102	-4.94%
Cumulative(3/3-11/3)	14,356	14,012	-344	-2.40%
Cumulative(2/1-11/3)	111,042	89,359	-21,683	-19.53%

4- SOME FINANCIAL RATIOS FOR THE ASE (11/3/2019)

SECTOR	P/E	P/BV	DIVIDEND YIELD (%)	TURNOVER (%)
FINANCIAL	13.046	1.112	5.086	0.057
SERVICES	16.362	1.186	5.458	0.023
INDUSTRY	55.949	1.337	3.396	0.060
OVERALL	14.940	1.186	4.940	0.049

5- STOCK PRICE INDEX WEIGHTED BY FREE FLOAT MARKET CAPITALIZATION (1999=1000)

	SUNDAY 10/03/2019	MONDAY 11/03/2019	% CHANGE	
			DAY BEFORE	YTD
GENERAL	1987.1	1985.0	-0.11%	3.99%
FINANCIAL	2746.5	2745.5	-0.04%	3.50%
SERVICES	1314.5	1310.1	-0.34%	2.37%
INDUSTRY	1967.0	1968.4	0.07%	4.55%

6- STOCK PRICE INDEX WEIGHTED BY MARKET CAPITALIZATION (1991=1000)

	SUNDAY 10/03/2019	MONDAY 11/03/2019	% CHANGE	
			DAY BEFORE	YTD
GENERAL	3927.5	3916.4	-0.28%	3.14%
BANKS	8491.8	8465.0	-0.32%	2.66%
INSURANCE	1363.9	1358.2	-0.41%	-1.33%
SERVICES	804.7	799.7	-0.62%	0.36%
INDUSTRY	2466.4	2467.6	0.05%	6.76%

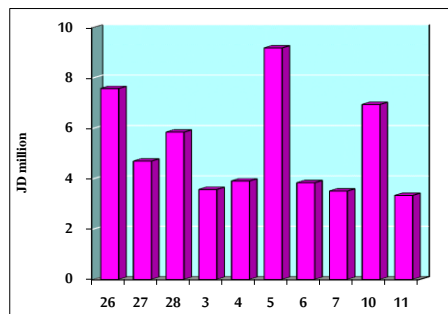
7- STOCK PRICE MARKET INDEX WEIGHTED BY FREE FLOAT MARKET CAP. (2012=1000)

	SUNDAY 10/03/2019	MONDAY 11/03/2019	% CHANGE	
			DAY BEFORE	YTD
FIRST MARKET	1057.1	1055.9	-0.12%	4.41%
SECOND MARKET	863.3	862.9	-0.05%	3.76%

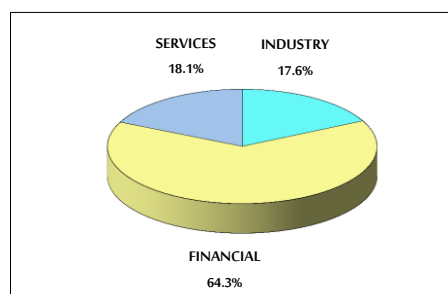
8- MARKET CAPITALIZATION (JD)

ASE MARKET CAPITALIZATION	16,570,279,319	16,526,728,150	-0.26%	2.51%
---------------------------	----------------	----------------	--------	-------

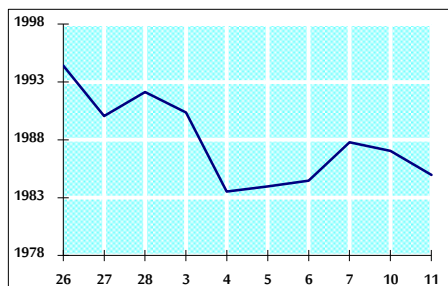
VALUE TRADED FROM 26/2 TO 11/3/2019



VALUE TRADED BY SECTOR MONDAY 11/3/2019



GENERAL FREE FLOAT PRICE INDEX FROM 26/2 TO 11/3/2019



GENERAL PRICE INDEX FROM 26/2 TO 11/3/2019

