

Daily Summary for Amman Stock Exchange

1- VALUE TRADED (JD)

	2018	2019	NET CHANGE	CHANGE (%)
Daily	5,941,235	3,911,367	-2,029,868	-34.17%
Cumulative(3/3-4/3)	9,818,035	7,484,541	-2,333,494	-23.77%
Cumulative(2/1-4/3)	262,760,407	195,583,076	-67,177,331	-25.57%

2- NO. OF SHARES TRADED

	2018	2019	NET CHANGE	CHANGE (%)
Daily	4,755,470	3,610,276	-1,145,194	-24.08%
Cumulative(3/3-4/3)	7,613,622	7,706,211	92,589	1.22%
Cumulative(2/1-4/3)	221,462,883	153,936,821	-67,526,062	-30.49%

3- NO. OF TRANSACTIONS

	2018	2019	NET CHANGE	CHANGE (%)
Daily	1,937	1,969	32	1.65%
Cumulative(3/3-4/3)	4,315	3,999	-316	-7.32%
Cumulative(2/1-4/3)	101,001	79,346	-21,655	-21.44%

4- SOME FINANCIAL RATIOS FOR THE ASE (4/3/2019)

SECTOR	P/E	P/BV	DIVIDEND YIELD (%)	TURNOVER (%)
FINANCIAL	12.897	1.100	5.144	0.053
SERVICES	16.640	1.211	5.402	0.054
INDUSTRY	59.407	1.356	3.365	0.058
OVERALL	14.937	1.184	4.962	0.054

5- STOCK PRICE INDEX WEIGHTED BY FREE FLOAT MARKET CAPITALIZATION (1999=1000)

	SUNDAY 03/03/2019	MONDAY 04/03/2019	% CHANGE	
			DAY BEFORE	YTD
GENERAL	1990.4	1983.5	-0.34%	3.91%
FINANCIAL	2743.5	2734.4	-0.33%	3.08%
SERVICES	1328.0	1320.8	-0.54%	3.20%
INDUSTRY	1965.4	1965.5	0.00%	4.40%

6- STOCK PRICE INDEX WEIGHTED BY MARKET CAPITALIZATION (1991=1000)

	SUNDAY 03/03/2019	MONDAY 04/03/2019	% CHANGE	
			DAY BEFORE	YTD
GENERAL	3920.1	3906.9	-0.34%	2.89%
BANKS	8387.0	8361.0	-0.31%	1.39%
INSURANCE	1366.9	1364.9	-0.15%	-0.85%
SERVICES	824.8	820.4	-0.53%	2.96%
INDUSTRY	2493.9	2486.9	-0.28%	7.60%

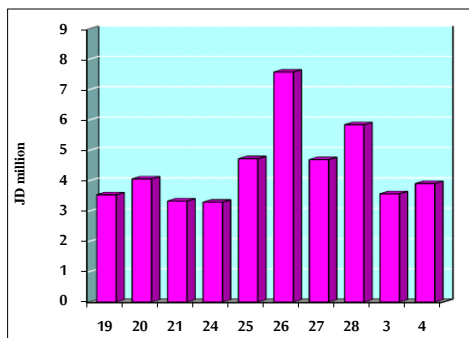
7- STOCK PRICE MARKET INDEX WEIGHTED BY FREE FLOAT MARKET CAP. (2012=1000)

	SUNDAY 03/03/2019	MONDAY 04/03/2019	% CHANGE	
			DAY BEFORE	YTD
FIRST MARKET	1059.5	1055.8	-0.35%	4.40%
SECOND MARKET	866.5	863.8	-0.31%	3.87%

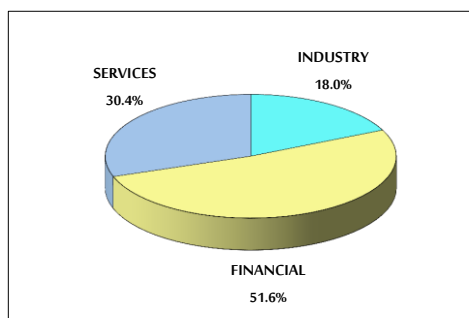
8- MARKET CAPITALIZATION (JD)

ASE MARKET CAPITALIZATION	16,542,118,823	16,490,046,502	-0.31%	2.28%
---------------------------	----------------	----------------	--------	-------

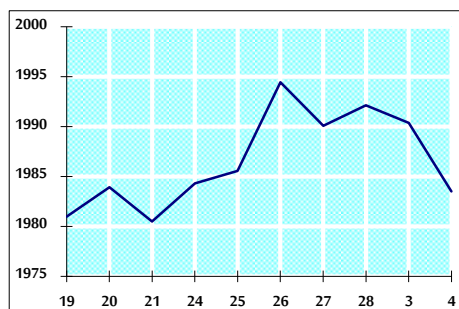
VALUE TRADED FROM 19/2 TO 4/3/2019



VALUE TRADED BY SECTOR MONDAY 4/3/2019



GENERAL FREE FLOAT PRICE INDEX FROM 19/2 TO 4/3/2019



GENERAL PRICE INDEX FROM 19/2 TO 4/3/2019

