

Daily Summary for Amman Stock Exchange

1- VALUE TRADED (JD)

	2018	2019	NET CHANGE	CHANGE (%)
Daily	9,844,394	3,511,076	-6,333,318	-64.33%
Cumulative(3/2-13/2)	68,682,525	41,627,813	-27,054,712	-39.39%
Cumulative(2/1-13/2)	182,705,519	132,522,183	-50,183,336	-27.47%

2- NO. OF SHARES TRADED

	2018	2019	NET CHANGE	CHANGE (%)
Daily	4,174,826	3,607,972	-566,854	-13.58%
Cumulative(3/2-13/2)	68,587,209	30,992,250	-37,594,959	-54.81%
Cumulative(2/1-13/2)	164,827,651	96,740,853	-68,086,798	-41.31%

3- NO. OF TRANSACTIONS

	2018	2019	NET CHANGE	CHANGE (%)
Daily	2,796	2,242	-554	-19.81%
Cumulative(3/2-13/2)	22,018	18,187	-3,831	-17.40%
Cumulative(2/1-13/2)	69,239	54,104	-15,135	-21.86%

4- SOME FINANCIAL RATIOS FOR THE ASE (13/2/2019)

SECTOR	P/E	P/BV	DIVIDEND YIELD (%)	TURNOVER (%)
FINANCIAL	12.615	1.091	5.266	0.060
SERVICES	17.163	1.247	5.273	0.046
INDUSTRY	57.953	1.359	3.367	0.039
OVERALL	14.541	1.181	5.016	0.054

5- STOCK PRICE INDEX WEIGHTED BY FREE FLOAT MARKET CAPITALIZATION (1999=1000)

	TUESDAY 12/02/2019	WEDNESDAY 13/02/2019	% CHANGE	
			DAY BEFORE	YTD
GENERAL	1989.1	1986.7	-0.12%	4.08%
FINANCIAL	2726.3	2725.7	-0.02%	2.75%
SERVICES	1346.5	1347.2	0.05%	5.27%
INDUSTRY	1980.8	1971.2	-0.48%	4.70%

6- STOCK PRICE INDEX WEIGHTED BY MARKET CAPITALIZATION (1991=1000)

	TUESDAY 12/02/2019	WEDNESDAY 13/02/2019	% CHANGE	
			DAY BEFORE	YTD
GENERAL	3924.4	3904.2	-0.52%	2.82%
BANKS	8352.7	8310.1	-0.51%	0.78%
INSURANCE	1373.6	1368.7	-0.36%	-0.57%
SERVICES	839.2	835.2	-0.47%	4.82%
INDUSTRY	2507.7	2493.8	-0.55%	7.89%

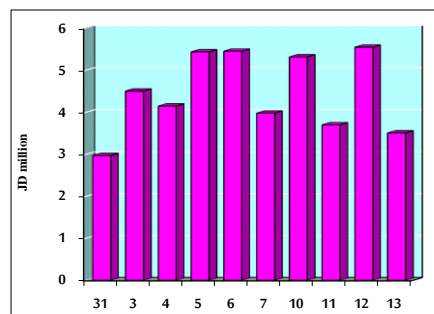
7- STOCK PRICE MARKET INDEX WEIGHTED BY FREE FLOAT MARKET CAP. (2012=1000)

	TUESDAY 12/02/2019	WEDNESDAY 13/02/2019	% CHANGE	
			DAY BEFORE	YTD
FIRST MARKET	1056.9	1055.8	-0.10%	4.40%
SECOND MARKET	875.3	874.3	-0.12%	5.14%

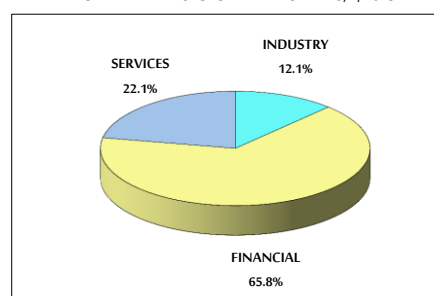
8- MARKET CAPITALIZATION (JD)

ASE MARKET CAPITALIZATION	16,579,061,981	16,505,379,499	-0.44%	2.37%
---------------------------	----------------	----------------	--------	-------

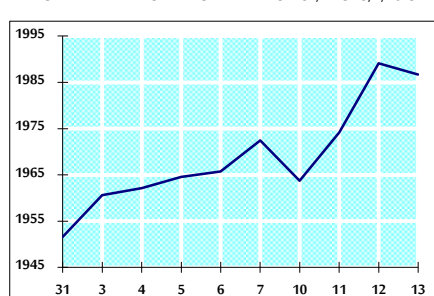
VALUE TRADED FROM 31/1 TO 13/2/2019



VALUE TRADED BY SECTOR WEDNESDAY 13/2/2019



GENERAL FREE FLOAT PRICE INDEX FROM 31/1 TO 13/2/2019



GENERAL PRICE INDEX FROM 31/1 TO 13/2/2019

