

Daily Summary for Amman Stock Exchange

1- VALUE TRADED (JD)

	2018	2019	NET CHANGE	CHANGE (%)
Daily	4,330,906	5,319,905	988,999	22.84%
Cumulative(3/2-10/2)	47,020,901	28,859,785	-18,161,116	-38.62%
Cumulative(2/1-10/2)	161,043,895	119,754,155	-41,289,740	-25.64%

2- NO. OF SHARES TRADED

	2018	2019	NET CHANGE	CHANGE (%)
Daily	3,641,343	4,544,806	903,463	24.81%
Cumulative(3/2-10/2)	57,613,332	19,238,904	-38,374,428	-66.61%
Cumulative(2/1-10/2)	153,853,774	84,987,507	-68,866,267	-44.76%

3- NO. OF TRANSACTIONS

	2018	2019	NET CHANGE	CHANGE (%)
Daily	2,180	1,749	-431	-19.77%
Cumulative(3/2-10/2)	14,737	11,903	-2,834	-19.23%
Cumulative(2/1-10/2)	61,958	47,820	-14,138	-22.82%

4- SOME FINANCIAL RATIOS FOR THE ASE (10/2/2019)

SECTOR	P/E	P/BV	DIVIDEND YIELD (%)	TURNOVER (%)
FINANCIAL	0.085	5.318	1.080	12.491
SERVICES	0.041	5.282	1.244	17.133
INDUSTRY	0.032	3.388	1.350	57.595
OVERALL	0.068	5.058	1.171	14.419

5- STOCK PRICE INDEX WEIGHTED BY FREE FLOAT MARKET CAPITALIZATION (1999=1000)

	THURSDAY 07/02/2019	SUNDAY 10/02/2019	% CHANGE	
			DAY BEFORE	YTD
GENERAL	1972.5	1963.8	-0.44%	2.88%
FINANCIAL	2704.7	2693.9	-0.40%	1.55%
SERVICES	1340.0	1336.2	-0.28%	4.41%
INDUSTRY	1962.7	1950.3	-0.63%	3.59%

6- STOCK PRICE INDEX WEIGHTED BY MARKET CAPITALIZATION (1991=1000)

	THURSDAY 07/02/2019	SUNDAY 10/02/2019	% CHANGE	
			DAY BEFORE	YTD
GENERAL	3896.3	3871.5	-0.64%	1.96%
BANKS	8284.1	8218.1	-0.80%	-0.34%
INSURANCE	1367.7	1369.8	0.15%	-0.49%
SERVICES	840.7	839.0	-0.20%	5.29%
INDUSTRY	2480.9	2468.7	-0.49%	6.81%

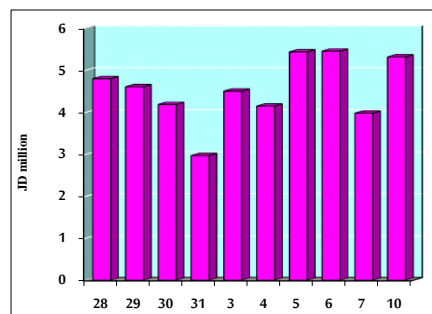
7- STOCK PRICE MARKET INDEX WEIGHTED BY FREE FLOAT MARKET CAP. (2012=1000)

	THURSDAY 07/02/2019	SUNDAY 10/02/2019	% CHANGE	
			DAY BEFORE	YTD
FIRST MARKET	1046.2	1041.3	-0.47%	2.97%
SECOND MARKET	877.0	874.1	-0.33%	5.11%

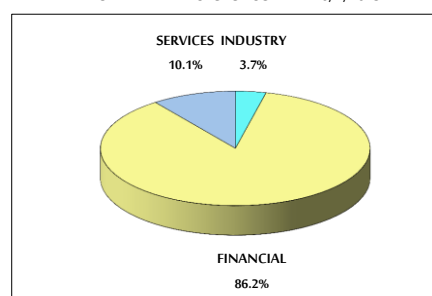
8- MARKET CAPITALIZATION (JD)

ASE MARKET CAPITALIZATION	16,473,795,774	16,376,717,945	-0.59%	1.58%
---------------------------	----------------	----------------	--------	-------

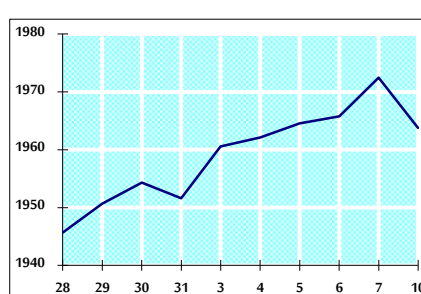
VALUE TRADED FROM 28/1 TO 10/2/2019



VALUE TRADED BY SECTOR SUNDAY 10/2/2019



GENERAL FREE FLOAT PRICE INDEX FROM 28/1 TO 10/2/2019



GENERAL PRICE INDEX FROM 28/1 TO 10/2/2019

