

Daily Summary for Amman Stock Exchange

1- VALUE TRADED (JD)

	2018	2019	NET CHANGE	CHANGE (%)
Daily	2,584,232	3,242,106	657,874	25.46%
Cumulative(2/1-8/1)	14,903,601	14,180,353	-723,248	-4.85%
Cumulative(2/1-8/1)	14,903,601	14,180,353	-723,248	-4.85%

2- NO. OF SHARES TRADED

	2018	2019	NET CHANGE	CHANGE (%)
Daily	2,696,890	2,773,176	76,286	2.83%
Cumulative(2/1-8/1)	16,458,365	14,241,552	-2,216,813	-13.47%
Cumulative(2/1-8/1)	16,458,365	14,241,552	-2,216,813	-13.47%

3- NO. OF TRANSACTIONS

	2018	2019	NET CHANGE	CHANGE (%)
Daily	1,721	1,507	-214	-12.43%
Cumulative(2/1-8/1)	9,436	8,695	-741	-7.85%
Cumulative(2/1-8/1)	9,436	8,695	-741	-7.85%

4- SOME FINANCIAL RATIOS FOR THE ASE (8/1/2019)

SECTOR	P/E	P/BV	DIVIDEND YIELD (%)	TURNOVER (%)
FINANCIAL	17.307	1.085	5.039	0.040
SERVICES	16.575	1.210	5.433	0.034
INDUSTRY	54.676	1.321	3.467	0.061
OVERALL	18.334	1.164	4.917	0.041

5- STOCK PRICE INDEX WEIGHTED BY FREE FLOAT MARKET CAPITALIZATION (1999=1000)

	MONDAY 07/01/2019	TUESDAY 08/01/2019	% CHANGE	
			DAY BEFORE	YTD
GENERAL	1931.1	1926.4	-0.25%	0.92%
FINANCIAL	2661.0	2650.1	-0.41%	-0.10%
SERVICES	1296.1	1296.3	0.01%	1.29%
INDUSTRY	1954.4	1955.1	0.04%	3.84%

6- STOCK PRICE INDEX WEIGHTED BY MARKET CAPITALIZATION (1991=1000)

	MONDAY 07/01/2019	TUESDAY 08/01/2019	% CHANGE	
			DAY BEFORE	YTD
GENERAL	3813.0	3813.3	0.01%	0.43%
BANKS	8180.6	8158.3	-0.27%	-1.06%
INSURANCE	1371.9	1368.1	-0.27%	-0.61%
SERVICES	813.2	817.7	0.56%	2.63%
INDUSTRY	2381.2	2392.3	0.47%	3.50%

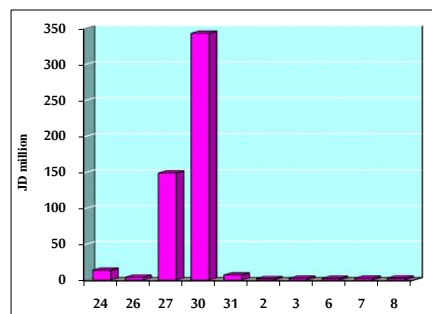
7- STOCK PRICE MARKET INDEX WEIGHTED BY FREE FLOAT MARKET CAP. (2012=1000)

	MONDAY 07/01/2019	TUESDAY 08/01/2019	% CHANGE	
			DAY BEFORE	YTD
FIRST MARKET	1019.8	1017.0	-0.27%	0.57%
SECOND MARKET	866.9	866.0	-0.10%	4.13%

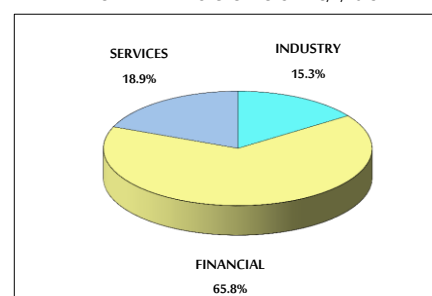
8- MARKET CAPITALIZATION (JD)

	2018	2019	NET CHANGE	CHANGE (%)
ASE MARKET CAPITALIZATION	16,160,322,780	16,160,656,719	333,939	0.24%

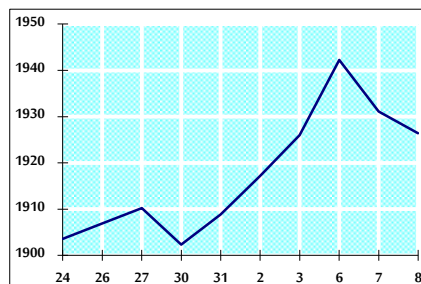
VALUE TRADED FROM 24/12/2018 TO 8/1/2019



VALUE TRADED BY SECTOR TUESDAY 8/1/2019



GENERAL FREE FLOAT PRICE INDEX FROM 24/12/2018 TO 8/1/2019



GENERAL PRICE INDEX FROM 24/12/2018 TO 8/1/2019

