

Daily Summary for Amman Stock Exchange

1- VALUE TRADED (JD)

	2018	2019	NET CHANGE	CHANGE (%)
Daily	3,697,790	2,701,908	-995,882	-26.93%
Cumulative(2/1-6/1)	9,987,845	8,082,518	-1,905,327	-19.08%
Cumulative(2/1-6/1)	9,987,845	8,082,518	-1,905,327	-19.08%

2- NO. OF SHARES TRADED

	2018	2019	NET CHANGE	CHANGE (%)
Daily	4,181,751	2,982,017	-1,199,734	-28.69%
Cumulative(2/1-6/1)	11,364,553	8,483,602	-2,880,951	-25.35%
Cumulative(2/1-6/1)	11,364,553	8,483,602	-2,880,951	-25.35%

3- NO. OF TRANSACTIONS

	2018	2019	NET CHANGE	CHANGE (%)
Daily	2,261	2,165	-96	-4.25%
Cumulative(2/1-6/1)	5,912	5,304	-608	-10.28%
Cumulative(2/1-6/1)	5,912	5,304	-608	-10.28%

4- SOME FINANCIAL RATIOS FOR THE ASE (6/1/2019)

SECTOR	P/E	P/BV	DIVIDEND YIELD (%)	TURNOVER (%)
FINANCIAL	17.405	1.092	5.011	0.038
SERVICES	16.606	1.213	5.423	0.050
INDUSTRY	54.871	1.326	3.455	0.066
OVERALL	18.422	1.169	4.893	0.045

5- STOCK PRICE INDEX WEIGHTED BY FREE FLOAT MARKET CAPITALIZATION (1999=1000)

	THURSDAY 03/01/2019	SUNDAY 06/01/2019	% CHANGE	
			DAY BEFORE	YTD
GENERAL	1926.0	1942.2	0.84%	1.75%
FINANCIAL	2674.0	2670.9	-0.12%	0.69%
SERVICES	1292.8	1301.6	0.68%	1.70%
INDUSTRY	1901.2	1980.8	4.19%	5.21%

6- STOCK PRICE INDEX WEIGHTED BY MARKET CAPITALIZATION (1991=1000)

	THURSDAY 03/01/2019	SUNDAY 06/01/2019	% CHANGE	
			DAY BEFORE	YTD
GENERAL	3807.4	3831.7	0.64%	0.91%
BANKS	8255.0	8206.0	-0.59%	-0.49%
INSURANCE	1379.2	1375.5	-0.27%	-0.07%
SERVICES	812.7	818.6	0.73%	2.74%
INDUSTRY	2300.4	2403.1	4.47%	3.97%

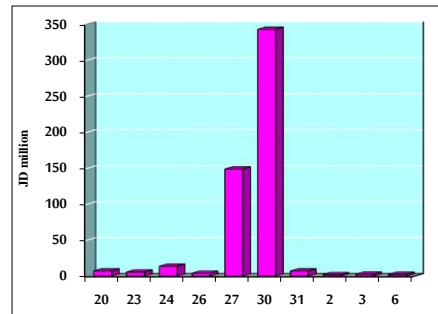
7- STOCK PRICE MARKET INDEX WEIGHTED BY FREE FLOAT MARKET CAP. (2012=1000)

	THURSDAY 03/01/2019	SUNDAY 06/01/2019	% CHANGE	
			DAY BEFORE	YTD
FIRST MARKET	1017.5	1025.3	0.77%	1.38%
SECOND MARKET	856.9	871.0	1.64%	4.74%

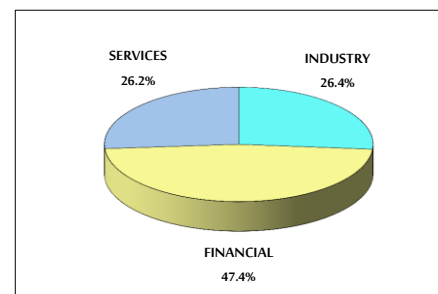
8- MARKET CAPITALIZATION (JD)

ASE MARKET CAPITALIZATION	16,140,709,807	16,235,204,763	0.59%	0.70%
---------------------------	----------------	----------------	-------	-------

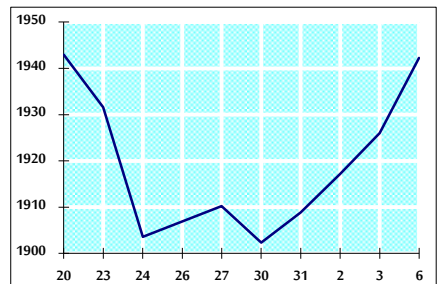
VALUE TRADED FROM 20/12/2018 TO 6/1/2019



VALUE TRADED BY SECTOR SUNDAY 6/1/2019



GENERAL FREE FLOAT PRICE INDEX FROM 20/12/2018 TO 6/1/2019



GENERAL PRICE INDEX FROM 20/12/2018 TO 6/1/2019

