

Daily Summary for Amman Stock Exchange

1- VALUE TRADED (JD)

	2018	2019	NET CHANGE	CHANGE (%)
Daily	3,272,769	2,138,586	-1,134,183	-34.66%
Cumulative(2/1-15/1)	36,450,276	46,312,594	9,862,318	27.06%
Cumulative(2/1-15/1)	36,450,276	46,312,594	9,862,318	27.06%

2- NO. OF SHARES TRADED

	2018	2019	NET CHANGE	CHANGE (%)
Daily	3,356,068	2,290,646	-1,065,422	-31.75%
Cumulative(2/1-15/1)	37,511,496	27,635,803	-9,875,693	-26.33%
Cumulative(2/1-15/1)	37,511,496	27,635,803	-9,875,693	-26.33%

3- NO. OF TRANSACTIONS

	2018	2019	NET CHANGE	CHANGE (%)
Daily	2,210	1,712	-498	-22.53%
Cumulative(2/1-15/1)	20,115	15,682	-4,433	-22.04%
Cumulative(2/1-15/1)	20,115	15,682	-4,433	-22.04%

4- SOME FINANCIAL RATIOS FOR THE ASE (15/1/2019)

SECTOR	P/E	P/BV	DIVIDEND YIELD (%)	TURNOVER (%)
FINANCIAL	17.304	1.085	5.040	0.021
SERVICES	16.447	1.201	5.476	0.041
INDUSTRY	55.253	1.335	3.431	0.087
OVERALL	18.355	1.165	4.911	0.034

5- STOCK PRICE INDEX WEIGHTED BY FREE FLOAT MARKET CAPITALIZATION (1999=1000)

	MONDAY 14/01/2019	TUESDAY 15/01/2019	% CHANGE	
			DAY BEFORE	YTD
GENERAL	1921.5	1918.9	-0.13%	0.53%
FINANCIAL	2641.1	2637.8	-0.13%	-0.56%
SERVICES	1291.6	1291.4	-0.02%	0.90%
INDUSTRY	1955.6	1951.9	-0.19%	3.67%

6- STOCK PRICE INDEX WEIGHTED BY MARKET CAPITALIZATION (1991=1000)

	MONDAY 14/01/2019	TUESDAY 15/01/2019	% CHANGE	
			DAY BEFORE	YTD
GENERAL	3811.0	3817.6	0.17%	0.54%
BANKS	8136.5	8159.0	0.28%	-1.06%
INSURANCE	1359.3	1355.8	-0.26%	-1.50%
SERVICES	810.1	810.7	0.07%	1.74%
INDUSTRY	2422.3	2420.7	-0.06%	4.73%

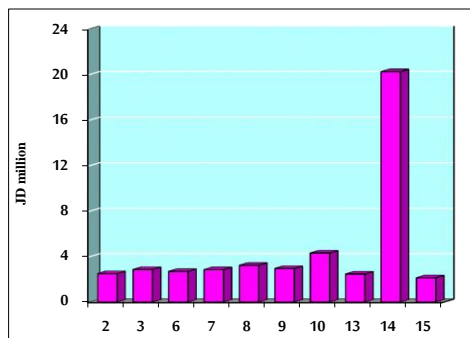
7- STOCK PRICE MARKET INDEX WEIGHTED BY FREE FLOAT MARKET CAP. (2012=1000)

	MONDAY 14/01/2019	TUESDAY 15/01/2019	% CHANGE	
			DAY BEFORE	YTD
FIRST MARKET	1015.7	1013.2	-0.24%	0.19%
SECOND MARKET	858.7	862.8	0.47%	3.75%

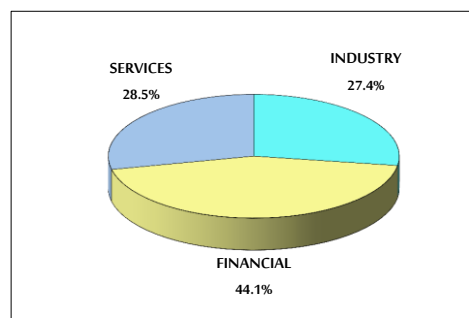
8- MARKET CAPITALIZATION (JD)

ASE MARKET CAPITALIZATION	16,147,601,857	16,173,156,532	0.16%	0.31%
---------------------------	----------------	----------------	-------	-------

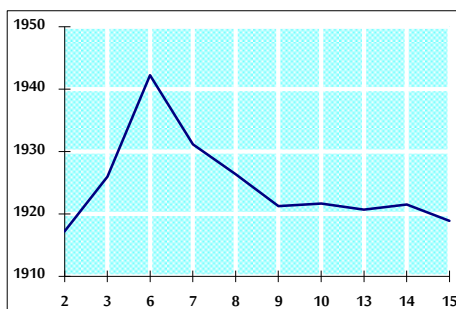
VALUE TRADED FROM 2/1 TO 15/1/2019



VALUE TRADED BY SECTOR TUESDAY 15/1/2019



GENERAL FREE FLOAT PRICE INDEX FROM 2/1 TO 15/1/2019



GENERAL PRICE INDEX FROM 2/1 TO 15/1/2019

