

## Daily Summary for Amman Stock Exchange

### 1- VALUE TRADED ( JD )

	2018	2019	NET CHANGE	CHANGE (%)
Daily	4,501,506	20,240,427	15,738,921	349.64%
Cumulative(2/1-14/1)	33,177,507	44,174,008	10,996,501	33.14%
Cumulative(2/1-14/1)	33,177,507	44,174,008	10,996,501	33.14%

### 2- NO. OF SHARES TRADED

	2018	2019	NET CHANGE	CHANGE (%)
Daily	4,474,962	3,498,082	-976,880	-21.83%
Cumulative(2/1-14/1)	34,155,428	25,345,157	-8,810,271	-25.79%
Cumulative(2/1-14/1)	34,155,428	25,345,157	-8,810,271	-25.79%

### 3- NO. OF TRANSACTIONS

	2018	2019	NET CHANGE	CHANGE (%)
Daily	2,218	1,534	-684	-30.84%
Cumulative(2/1-14/1)	17,905	13,970	-3,935	-21.98%
Cumulative(2/1-14/1)	17,905	13,970	-3,935	-21.98%

### 4- SOME FINANCIAL RATIOS FOR THE ASE (14/1/2019)

SECTOR	P/E	P/BV	DIVIDEND YIELD (%)	TURNOVER (%)
FINANCIAL	17.255	1.082	5.054	0.028
SERVICES	16.449	1.201	5.475	0.033
INDUSTRY	55.315	1.337	3.427	0.202
OVERALL	18.323	1.163	4.920	0.052

### 5- STOCK PRICE INDEX WEIGHTED BY FREE FLOAT MARKET CAPITALIZATION (1999=1000)

	SUNDAY 13/01/2019	MONDAY 14/01/2019	% CHANGE	
			DAY BEFORE	YTD
GENERAL	1920.7	1921.5	0.04%	0.66%
FINANCIAL	2634.6	2641.1	0.25%	-0.44%
SERVICES	1297.0	1291.6	-0.41%	0.92%
INDUSTRY	1958.5	1955.6	-0.15%	3.87%

### 6- STOCK PRICE INDEX WEIGHTED BY MARKET CAPITALIZATION (1991=1000)

	SUNDAY 13/01/2019	MONDAY 14/01/2019	% CHANGE	
			DAY BEFORE	YTD
GENERAL	3802.8	3811.0	0.22%	0.37%
BANKS	8125.5	8136.5	0.14%	-1.33%
INSURANCE	1358.6	1359.3	0.05%	-1.25%
SERVICES	811.7	810.1	-0.20%	1.67%
INDUSTRY	2403.4	2422.3	0.78%	4.80%

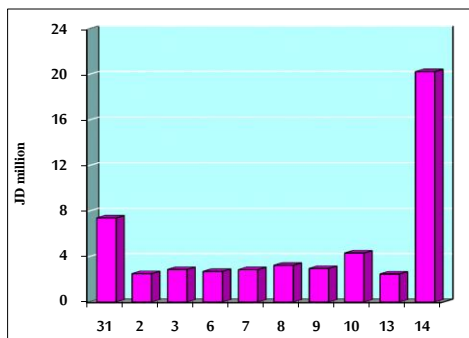
### 7- STOCK PRICE MARKET INDEX WEIGHTED BY FREE FLOAT MARKET CAP. (2012=1000)

	SUNDAY 13/01/2019	MONDAY 14/01/2019	% CHANGE	
			DAY BEFORE	YTD
FIRST MARKET	1015.3	1015.7	0.04%	0.43%
SECOND MARKET	858.5	858.7	0.02%	3.26%

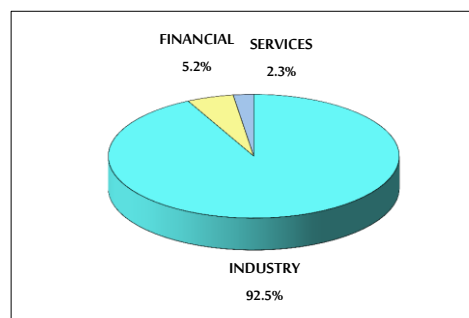
### 8- MARKET CAPITALIZATION (JD)

ASE MARKET CAPITALIZATION	16,115,589,899	16,147,601,857	0.20%	0.15%
---------------------------	----------------	----------------	-------	-------

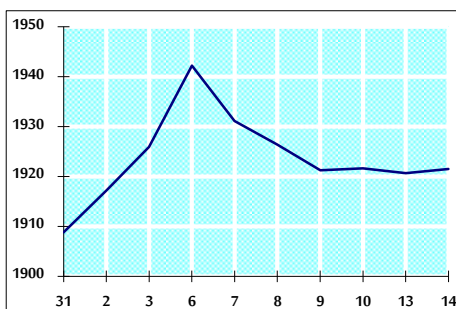
VALUE TRADED FROM 31/12/2018 TO 14/1/2019



VALUE TRADED BY SECTOR MONDAY 14/1/2019



GENERAL FREE FLOAT PRICE INDEX FROM 31/12/2018 TO 14/1/2019



GENERAL PRICE INDEX FROM 31/12/2018 TO 14/1/2019

