

## Daily Summary for Amman Stock Exchange

### 1- VALUE TRADED (JD)

	2017	2018	NET CHANGE	CHANGE (%)
Daily	3,691,677	3,766,343	74,666	2.02%
Cumulative(1/11-15/11)	49,856,917	57,512,784	7,655,867	15.36%
Cumulative(2/1-15/11)	2,738,517,788	1,683,782,806	-1,054,734,982	-38.51%

### 2- NO. OF SHARES TRADED

	2017	2018	NET CHANGE	CHANGE (%)
Daily	3,030,595	4,201,864	1,171,269	38.65%
Cumulative(1/11-15/11)	45,920,012	51,920,112	6,000,100	13.07%
Cumulative(2/1-15/11)	1,559,714,702	1,022,621,374	-537,093,328	-34.44%

### 3- NO. OF TRANSACTIONS

	2017	2018	NET CHANGE	CHANGE (%)
Daily	1,661	2,428	767	46.18%
Cumulative(1/11-15/11)	24,626	27,412	2,786	11.31%
Cumulative(2/1-15/11)	657,495	457,205	-200,290	-30.46%

### 4- SOME FINANCIAL RATIOS FOR THE ASE (15/11/2018)

SECTOR	P/E	P/BV	DIVIDEND YIELD (%)	TURNOVER (%)
FINANCIAL	17.560	1.103	4.961	0.055
SERVICES	16.629	1.233	5.359	0.069
INDUSTRY	57.252	1.356	3.360	0.085
OVERALL	18.331	1.175	4.847	0.062

### 5- STOCK PRICE INDEX WEIGHTED BY FREE FLOAT MARKET CAPITALIZATION (1999=1000)

	WEDNESDAY 14/11/2018	THURSDAY 15/11/2018	% CHANGE	
			DAY BEFORE	YTD
GENERAL	1962.4	1965.5	0.16%	-7.58%
FINANCIAL	2678.9	2684.6	0.21%	-6.83%
SERVICES	1342.6	1333.5	-0.68%	-8.02%
INDUSTRY	2010.4	2031.6	1.06%	-8.88%

### 6- STOCK PRICE INDEX WEIGHTED BY MARKET CAPITALIZATION (1991=1000)

	WEDNESDAY 14/11/2018	THURSDAY 15/11/2018	% CHANGE	
			DAY BEFORE	YTD
GENERAL	3882.7	3888.3	0.14%	-3.02%
BANKS	8257.9	8278.3	0.25%	-0.68%
INSURANCE	1421.2	1419.2	-0.14%	12.52%
SERVICES	843.0	839.9	-0.36%	-10.05%
INDUSTRY	2459.5	2464.9	0.22%	-5.77%

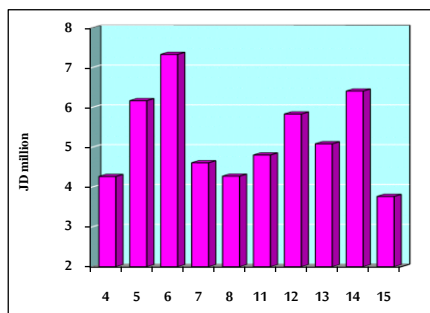
### 7- STOCK PRICE MARKET INDEX WEIGHTED BY FREE FLOAT MARKET CAP. (2012=1000)

	WEDNESDAY 14/11/2018	THURSDAY 15/11/2018	% CHANGE	
			DAY BEFORE	YTD
FIRST MARKET	1034.2	1036.6	0.23%	-8.68%
SECOND MARKET	896.4	893.6	-0.30%	-2.41%

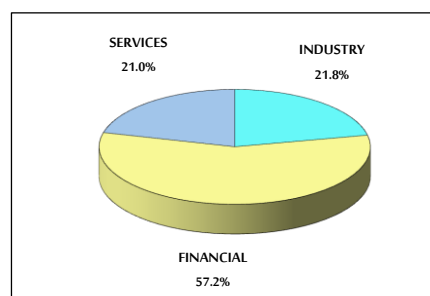
### 8- MARKET CAPITALIZATION (JD)

ASE MARKET CAPITALIZATION	16,468,524,675	16,492,176,550	0.14%	-2.77%
---------------------------	----------------	----------------	-------	--------

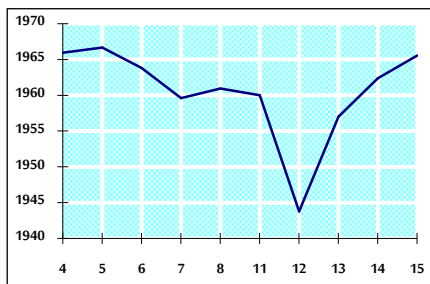
VALUE TRADED FROM 4/11 TO 15/11/2018



VALUE TRADED BY SECTOR THURSDAY 15/11/2018



GENERAL FREE FLOAT PRICE INDEX FROM 4/11 TO 15/11/2018



GENERAL PRICE INDEX FROM 4/11 TO 15/11/2018

